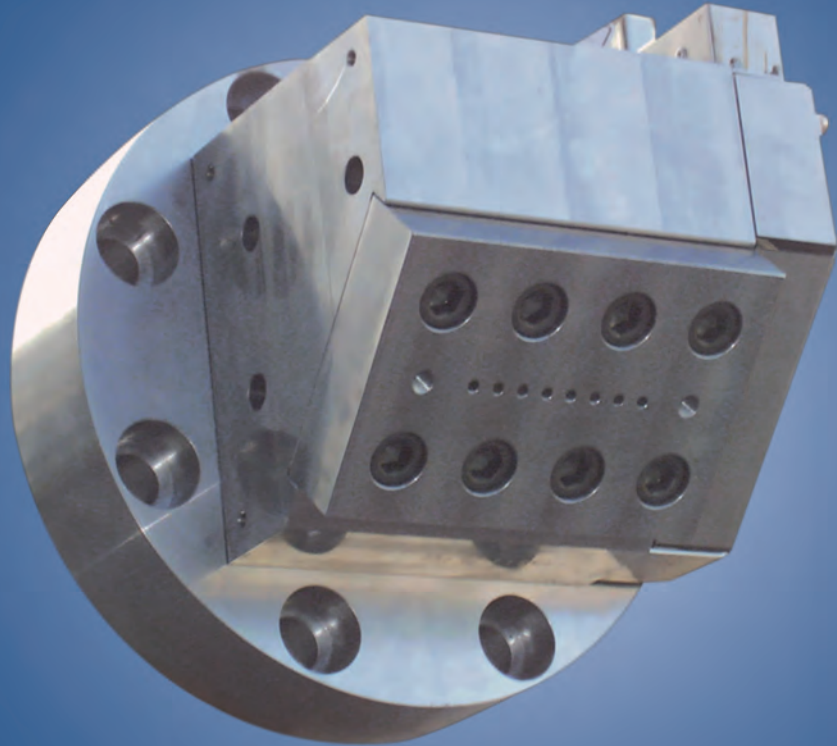


# Strand die head

## ips-SGK



- Homogeneous melt distribution
- Short dwell times
- Optimized for low pressure drop
- Good accessibility and easy cleaning
- Rheological layout of the melt channels
- Various sizes and construction types tailored to your process

**Option:** Cost-optimized series for 1 to 10 strands

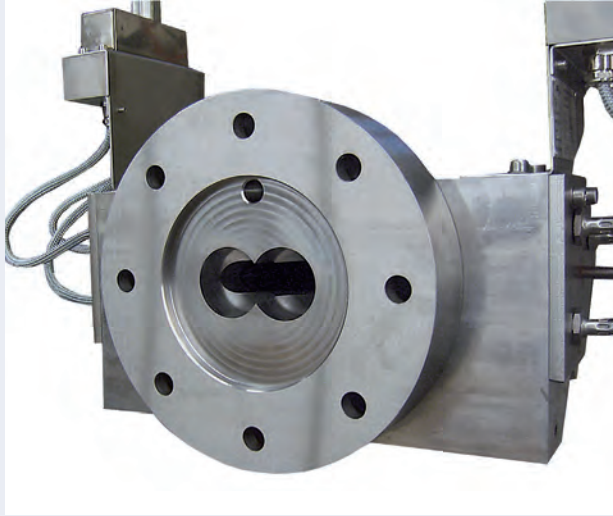
**Option:** Thermal insulation of the strand die head

**Option:** Swing-away hinge design for the strand die head

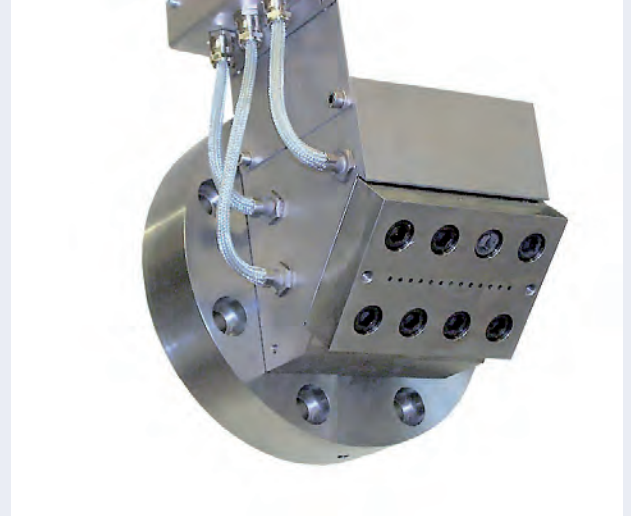
**Option:** Quick-connect clamp systems

## Design details

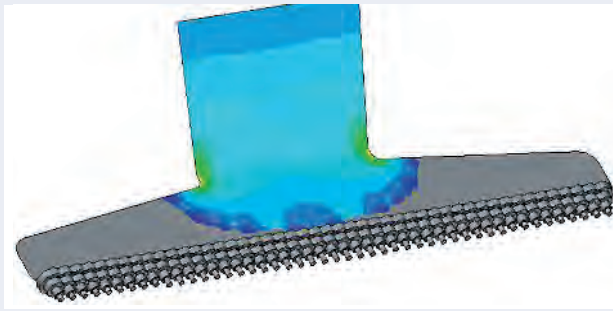
- Pre-bored holes to take melt pressure and temperature sensors
- Optimum design of the strand die head for processing your product



Basic configuration with adapter for connection to the extruder/screen changer



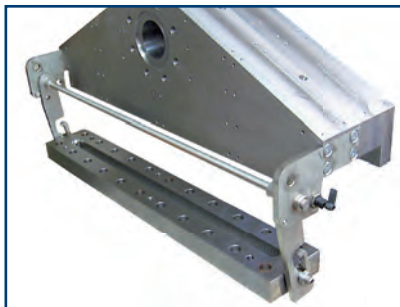
Electrical heating with cartridge heater



ips strand die heads have been carefully designed and optimized for the products to be processed, the throughputs and the permissible pressure loss

## Options and accessories

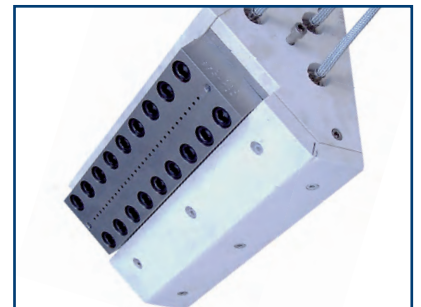
ips systems are available with a range of options and accessories. We will be happy to advise you on the systems we offer, and the additions that will be best for you.



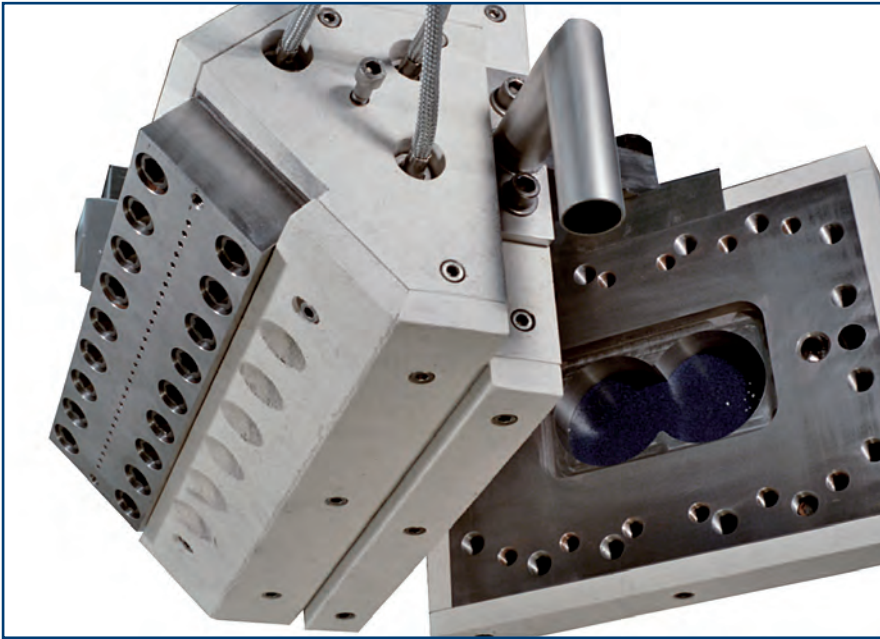
Assembly aid for die plate – ips-SGK 900 strand die head



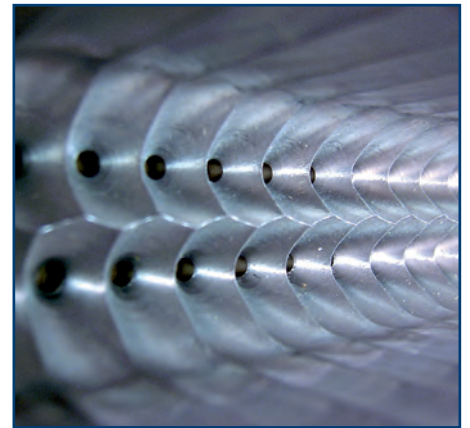
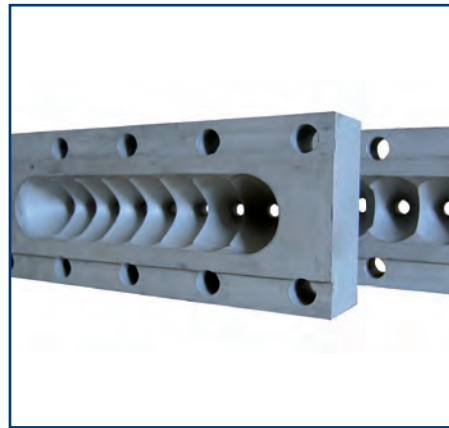
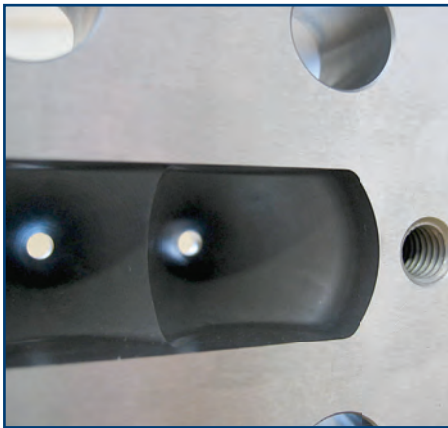
Quick-connect systems – version with clamping flange



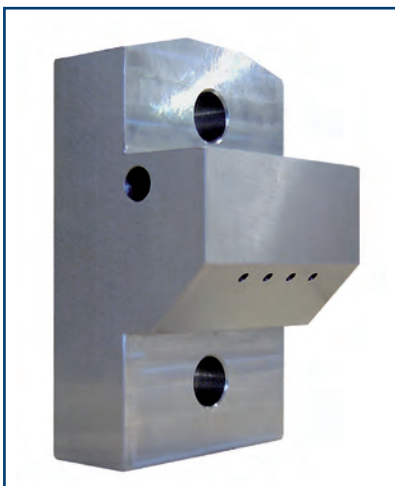
Thermal insulation of the strand die head – even temperature distribution and strand flow



ips strand die head with swing-away hinge design for better access to the extruder screw



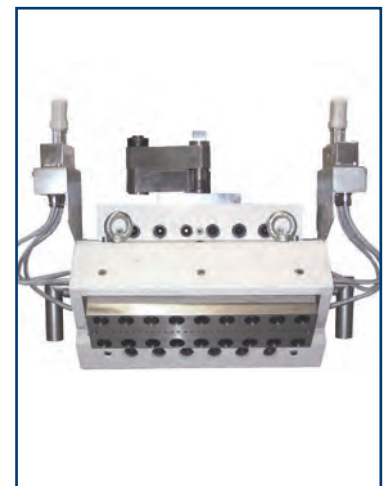
The careful selection of materials, hardness and surface treatments ensures excellent service life times, even with corrosive and wearing products



ips strand die head for 4 strands – cost-optimized version without separate die plate



ips-SGK 900 strand die head for 180 strands



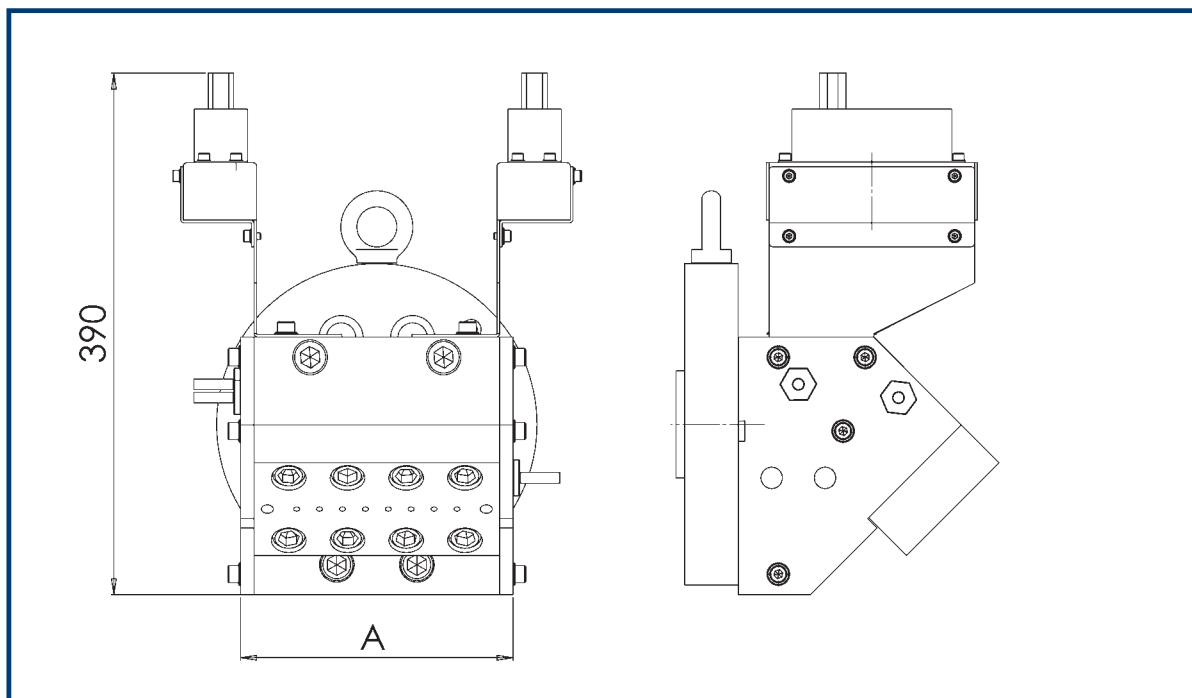
ips-SGK 220 strand die head – with thermal insulation and swing-away hinge design

### Technical data

Size	ips-SGK 120	ips-SGK 220	ips-SGK 320	ips-SGK 420
Nominal width (mm)	120	220	320	420
Max. number of die holes (mm) with die hole of diameter 4,5 mm and 10 mm pitch	13	23	33	43
Max. permissible temperature in the product area (°C)	300	300	300	300
Max. permissible pressure in the product area (bar)	150	150	150	150
Heating	electric	electric	electric	electric
Heat output (kW) approx.	3.2	4.4	5.5	7.0
Other	Incl. connector flange for fitting to existing systems; without temperature sensor and control			

Other sizes and designs available on request

### Dimensions



Size	ips-SGK 120	ips-SGK 220	ips-SGK 320	ips-SGK 420
A (mm) approx.	200	300	400	500

We reserve the right to make changes without notice. The illustrations may include options and accessories that are not part of the standard scope of supply.

